

  
**PROMINENCE**  
ESTATES



**RESIDENTIAL**  
PROPERTY EXPERTS

COVENTRY, WARWICKSHIRE  
& LEAMINGTON SPA

**HOLYHEAD ROAD,**  
COUNDON, COVENTRY, CV1 3AA

**£750 PCM**



## HOLYHEAD ROAD



  
**PROMINENCE**  
— ESTATES —

A spacious and well-presented large studio-style room with a private ensuite is available in a friendly and well-maintained house share, ideally located close to Coventry City Centre.

The room is generously sized, offering plenty of space for sleeping, relaxing and working. It features modern décor throughout and benefits from its own private ensuite bathroom with shower, WC and wash basin, providing comfort and privacy. The room is bright, stylish and well suited to a single professional. It forms part of a clean, quiet and respectful shared household.

There are a variety of local convenience stores, takeaways, cafés and supermarkets within walking distance. FarGo Village, local gyms and everyday amenities are nearby, with Coventry city centre shopping, restaurants and nightlife just minutes away.

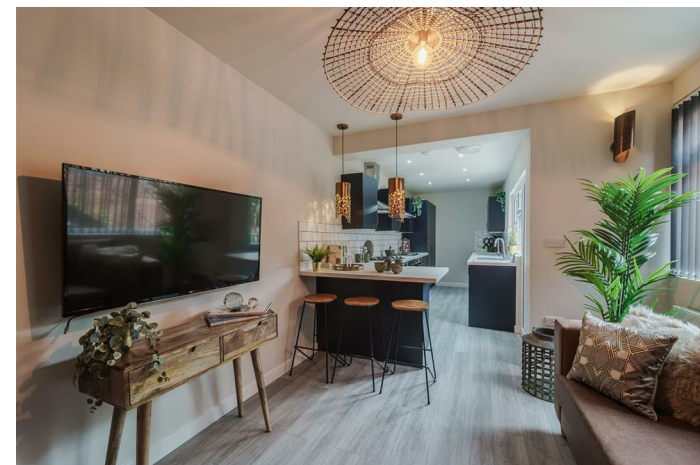
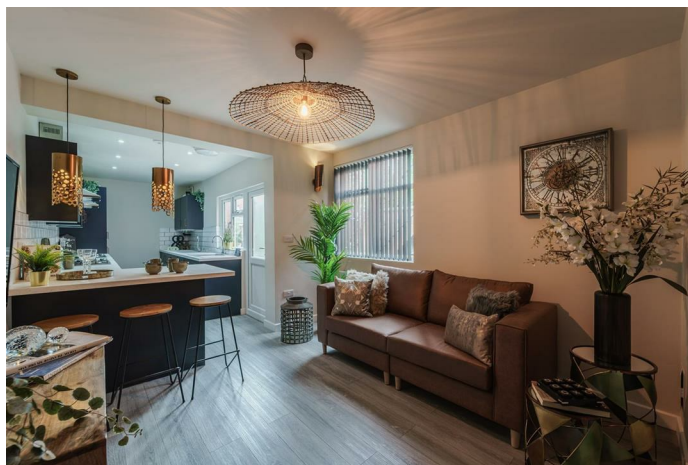
The property benefits from excellent public transport links, with frequent bus services into the city centre. Coventry Train Station is easily accessible, offering direct services to Birmingham, London and beyond. There are also good road links to the A45, A46 and M6, making it ideal for commuters.

This property offers a comfortable, stylish and private living space in a highly convenient location.

Enquire now to arrange a viewing.

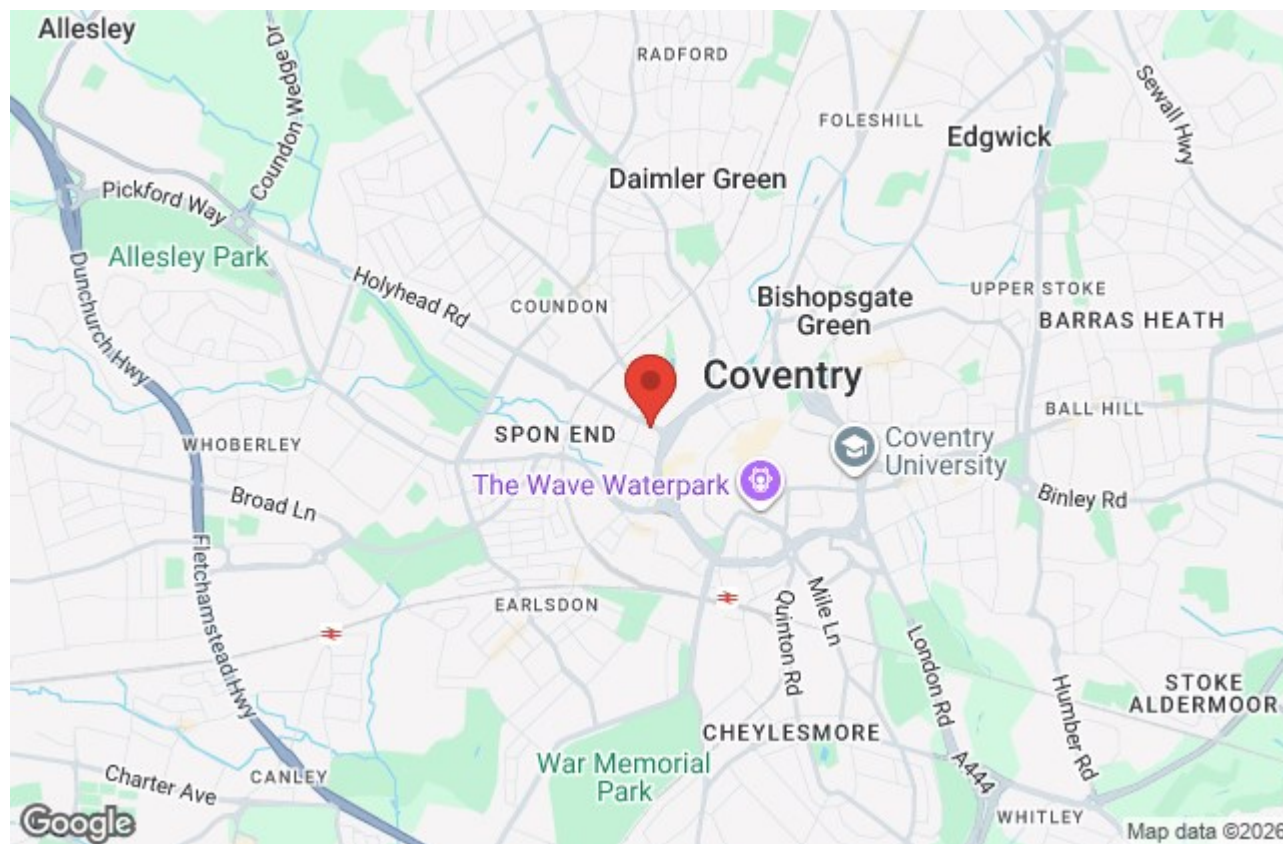
The house includes a shared kitchen with ample storage and cooking facilities, along with communal areas that are maintained to a good standard. The house share offers a calm and friendly living environment.

The property is conveniently located near Coventry City Centre, with easy access to local employers and key amenities. It is ideal for those who want to enjoy city living while still being in a residential setting.









Prominence Estates  
5 Queen Isabella Avenue,  
Cheylesmore,  
Coventry,  
CV3 5GE

02476 309 826  
[lettings@prominenceestates.com](mailto:lettings@prominenceestates.com)  
[www.prominenceestates.com](http://www.prominenceestates.com)

  
**PROMINENCE**  
— ESTATES —